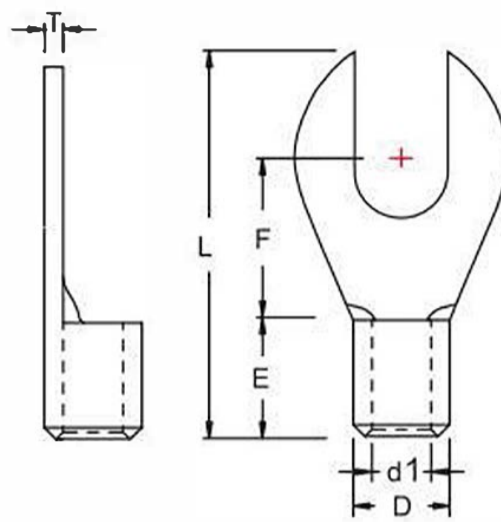


## Non-Insulated Fork Terminals

Brand	KF®
Finish/Coating	Tinned
Base Materials	Copper
Insulation Material	N/A
Brazed	Seam
Wire/Cable Type	Regular Wire
Color Code	Standard
MOQ	1000Pcs/item
Payment Terms	Based on orders
Delivery	FOB/CIF/DDP



Spec(American AWG)	26-22	22-16	16-14	14-12	12-10	8	6
Spec(JIS AWG)	0.5	1.25	2	3.5	5.5	8	14
Spec(DIN AWG)	0.5	1	2.5		4.0-6.0	10	16
Spec(GB mm²)	0.1-0.5	0.5-1.5	2.5	4	6.0	10	16
Max Current		19	27	37	48.0	62	88



Wire Range	SKU#	MFG#	Stud Size		Dimension(mm)								Tool	pcs/pack				
			USA	Meric	d2	W	F	L	E	D	d1	T						
A.W.G. 22-16 0.5~1.5mm²	KFO0A10	ANB1-3.2	#4	3	0.126	3.2	0.217	5.5	0.197	5.0	0.457	11.6	0.189 (4.8)	0.134 (3.4)	0.067 (1.7)	0.03 (0.75)	IZUMI 5N18	1000
	KFO0A11	ANB1-3.7	#6	3.5	0.146	3.7	0.26	6.6	0.248	6.3	0.531	13.5						1000
	KFO0A12	ANB1-4	#8	4	0.169	4.3	0.315	8.0	0.276	7.0	0.583	14.8						1000
	KFO0A13	ANB1-5	#10	5	0.209	5.3	0.315	8.0	0.276	7.0	0.583	14.8						1000
	KFO0A14	ANB1-6	1/4"	6	0.252	6.4	0.457	11.6	0.433	11.0	0.799	20.3						1000
	KFO0A15	ANB1-8	5/16"	8	0.331	8.4	0.457	11.6	0.433	11.0	0.764	19.4						1000
	KFO0A16	ANB1-10	3/8"	10	0.413	10.5	0.591	15.0	0.433	11.0	0.886	22.5						1000
A.W.G. 16-14 1.5~2.5mm²	KFO0A20	ANB2-3.2	#4	3	0.126	3.2	0.26	6.6	0.185	4.7	0.472	12.0	0.189 (4.8)	0.161 (4.1)	0.091 (2.3)	0.031 (0.8)	IZUMI 5N18	1000
	KFO0A21	ANB2-3.7	#6	3.5	0.146	3.7	0.26	6.6	0.248	6.3	0.531	13.5						1000
	KFO0A22	ANB2-4	#8	4	0.169	4.3	0.335	8.5	0.307	7.8	0.626	15.9						1000
	KFO0A23	ANB2-5	#10	5	0.209	5.3	0.374	9.5	0.287	7.3	0.614	15.6						1000
	KFO0A24	ANB2-6	1/4"	6	0.252	6.4	0.472	12.0	0.433	11.0	0.807	20.5						1000
	KFO0A25	ANB2-8	5/16"	8	0.331	8.4	0.472	12.0	0.433	11.0	0.776	19.7						1000
	KFO0A26	ANB2-10	3/8"	10	0.413	10.5	0.591	15.0	0.539	13.7	0.886	22.5						1000
A.W.G. 12-10 4~6mm²	KFO0A30	ANB5-4	#8	4	0.169	4.3	0.283	7.2	0.358	9.1	0.744	18.9	0.236 (6.0)	0.22 (5.6)	0.134 (3.4)	0.039 (1.0)	IZUMI 5N18	1000
	KFO0A31	ANB5-5	#10	5	0.209	5.3	0.374	9.5	0.358	9.1	0.732	18.6						1000
	KFO0A32	ANB5-6	1/4"	6	0.252	6.4	0.472	12.0	0.413	10.5	0.835	21.2						1000
	KFO0A33	ANB5-8	5/16"	8	0.331	8.4	0.591	15.0	0.531	13.5	1.0	25.4						1000
	KFO0A34	ANB5-10	3/8"	10	0.413	10.5	0.591	15.0	0.531	13.5	0.965	24.5						1000
A.W.G. 8 8mm²	KFO0A40	ANB8-3.7	#6	3.5	0.146	3.7	0.315	8.0	0.366	9.3	0.807	20.5	0.335 (8.5)	0.283 (7.2)	0.177 (4.5)	0.047 (1.2)	IZUMI 5N18	500
	KFO0A41	ANB8-4	#8	4	0.169	4.3	0.315	8.0	0.366	9.3	0.807	20.5						500
	KFO0A42	ANB8-5	#10	5	0.209	5.3	0.315	8.0	0.366	9.3	0.807	20.5						500