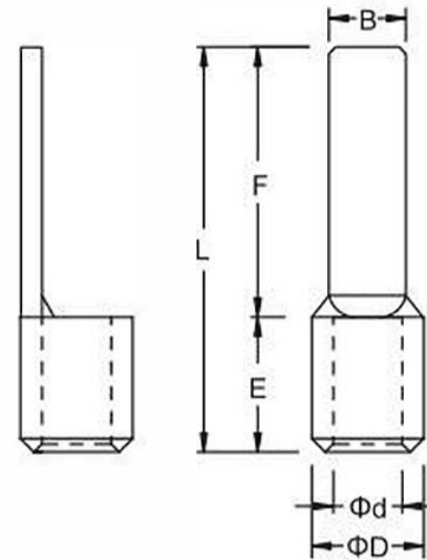


Non-Insulated Blade Terminals

Brand	KF®
Finish/Coating	Tinned
Base Materials	Copper
Insulation Material	N/A
Brazed	Seam
Wire/Cable Type	Regular Wire
Color Code	Standard
MOQ	1000Pcs/item
Payment Terms	Based on orders
Delivery	FOB/CIF/DDP



Spec(American AWG)	26-22	22-16	16-14	14-12	12-10	8	6
Spec(JIS AWG)	0.5	1.25	2	3.5	5.5	8	14
Spec(DIN AWG)	0.5	1	2.5		4.0-6.0	10	16
Spec(GB mm²)	0.1-0.5	0.5-1.5	2.5	4	6.0	10	16
Max Current		19	27	37	48.0	62	88



Wire Range	SKU#	MFG#	Dimension(mm)										Tool	pcs/pack
			B		L		F		E	D	d	T		
A.W.G. 22-16 0.5~1.5mm²	KFO0510	DBN1.25-10	0.098	2.5	0.591	15.0	0.394	10.0	0.197 (5.0)	0.138 (3.5)	0.079 (2.0)	0.03 (0.75)	IZUMI 5N18	1000
	KFO0511	DBN1.25-14	0.079	2.0	0.748	19.0	0.551	14.0						1000
	KFO0512	DBN1.25-18	0.079	2.0	0.906	23.0	0.709	18.0						1000
A.W.G. 16-14 1.5~2.5mm²	KFO0520	DBN2-10	0.118	3.0	0.591	15.0	0.394	10.0	0.197 (5.0)	0.157 (4.0)	0.098 (2.5)	0.031 (0.8)	IZUMI 5N18	1000
	KFO0521	DBN2-14	0.098	2.5	0.748	19.0	0.551	14.0						1000
	KFO0522	DBN2-18	0.079	2.0	0.906	23.0	0.709	18.0						1000
A.W.G. 12-10 4~6mm²	KFO0530	DBN5.5-10	0.118	3.0	0.669	17.0	0.394	10.0	0.276 (7.0)	0.217 (5.5)	0.138 (3.5)	0.039 (1.0)	IZUMI 5N18	1000
	KFO0531	DBN5.5-14	0.177	4.5	0.827	21.0	0.551	14.0						1000
	KFO0532	DBN5.5-18	0.177	4.5	0.984	25.0	0.709	18.0						1000
A.W.G. 8 8mm²	KFO0540	DBN8-14	0.197	5.0	0.886	22.5	0.551	14.0	0.335 (8.5)	0.276 (7.0)	0.197 (5.0)	0.047 (1.2)	IZUMI 5N18	1000
A.W.G. 6 14mm²	KFO0550	DBN14-16	0.236	6.0	1.043	26.5	0.63	16.0	0.413 (10.5)	0.354 (9.0)	0.236 (6.0)	0.055 (1.4)	OPT TP- 150D	1000