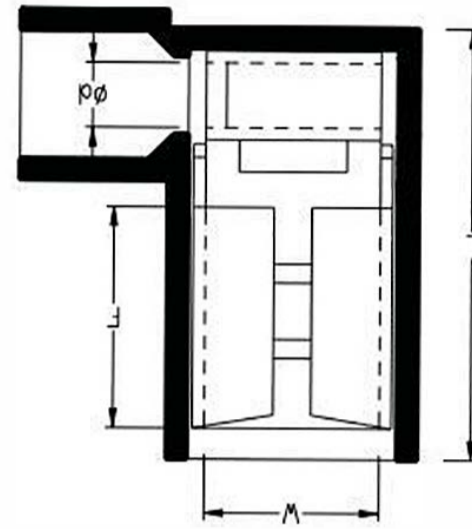


Nylon-Insulated Flag Quick Disconnectors

Quick Disconnectors

Brand	KF [®]
Finish/Coating	Tinned
Base Materials	Brass, Nylon
Insulation Material	N/A
Brazed	Seam
Wire/Cable Type	Regular Wire
Color Code	Standard
MOQ	1000Pcs/item
Payment Terms	Based on orders
Delivery	FOB/CIF/DDP



Spec (American AWG)	22-16	16-14
Spec (JIS AWG)	1.25	2
Spec (DIN AWG)	1	2.5
Spec (GB mm ²)	0.5-1.5	2.5
Max Current	10	15
Operating Voltage	600V	
Temperature Withstand	105°C	



Wire Range	SKU#	MFG#	Dimension(mm)										Color	Tool	pcs/pack
			W		F		L		D		T				
A.W.G. 22-16 0.5~1.5mm ²	KFQNF10	FLDNY 1.25-250	0.256	6.5	0.295	7.5	0.571	14.5	0.079	2.0	0.016	0.4	red	OPT LY-03FL	500
A.W.G. 16-14 1.5~2.5mm ²	KFQNF20	FLDNY 2-250	0.256	6.5	0.295	7.5	0.65	16.5	0.098	2.5	0.016	0.4	blue	OPT LY-03FL	500