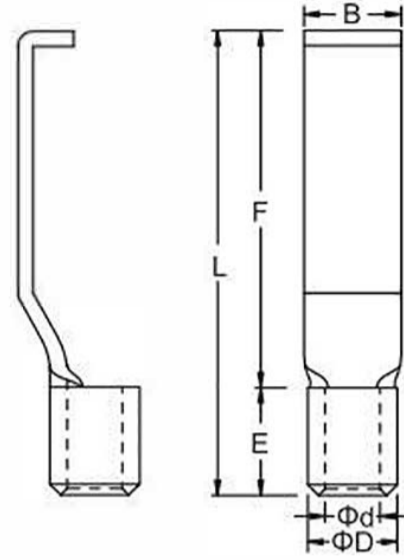


Non-Insulated Lipped Blade Terminals

Brand	KF [®]
Finish/Coating	Tinned
Base Materials	Copper
Insulation Material	N/A
Brazed	Seam
Wire/Cable Type	Regular Wire
Color Code	Standard
MOQ	1000Pcs/item
Payment Terms	Based on orders
Delivery	FOB/CIF/DDP



Spec(American AWG)	26-22	22-16	16-14	14-12	12-10	8
Spec(JIS AWG)	0.5	1.25	2	3.5	5.5	8
Spec(DIN AWG)	0.5	1	2.5		4.0-6.0	10
Spec(GB mm ²)	0.1-0.5	0.5-1.5	2.5	4	6.0	10
Max Current		19	27	37	48.0	62



Wire Range	SKU#	MFG#	Dimension(mm)										Tool	pcs/pack
			B		L		F		E	D	d	T		
A.W.G. 22-16 0.5~1.5mm ²	KFO0610	LBNB1.25-3	0.118	3.0	0.827	21.0	0.63	16.0	0.197 (5.0)	0.138 (3.5)	0.079 (2.0)	0.03 (0.75)	IZUMI 5N18	1000
	KFO0611	LBNB1.25-4.6	0.181	4.6	0.827	21.0	0.63	16.0						1000
A.W.G. 16-14 1.5~2.5mm ²	KFO0620	LBNB2-3	0.118	3.0	0.866	22.0	0.669	17.0	0.197 (5.0)	0.157 (4.0)	0.098 (2.5)	0.031 (0.8)	IZUMI 5N18	1000
	KFO0621	LBNB2-4.6	0.181	4.6	0.866	22.0	0.669	17.0						1000
A.W.G. 12-10 4~6mm ²	KFO0630	LBNB5.5-3	0.118	3.0	0.827	24.0	0.669	17.0	0.276 (7.0)	0.217 (5.5)	0.138 (3.5)	0.039 (1.0)	IZUMI 5N18	1000
	KFO0631	LBNB5.5-4.6	0.181	4.6	0.945	24.0	0.669	17.0						1000