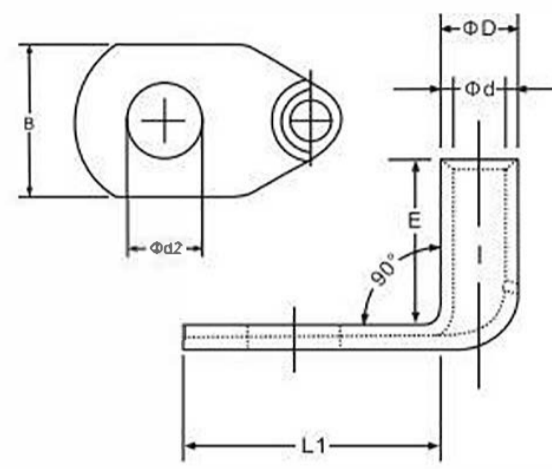
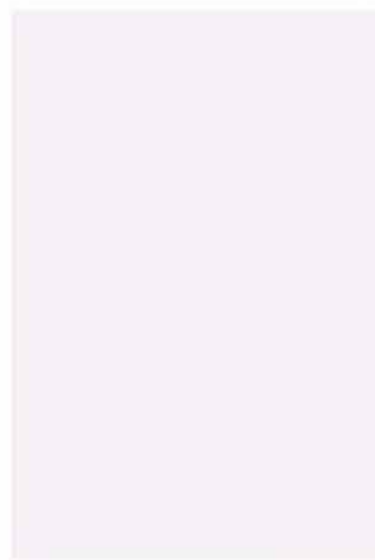


Copper Tubular Lugs (Type LYF 90°)

Brand	KF [®]
Finish/Coating	Tinned
Base Materials	Copper
Insulation Material	N/A
Brazed	Seam
Wire/Cable Type	Regular Wire
Color Code	Standard
MOQ	1000Pcs/item
Payment Terms	Based on orders
Delivery	FOB/CIF/DDP



Spec(American AWG)	8	6	4	2	1/0	2/0	3/0	4/0
Spec(JIS AWG)	10	16	25	35	50	70	95	120
Spec(DIN AWG)								
Spec(GB mm ²)								
Max Current	70	95	125	170	230	265	310	360



Wire Range	SKU#	MFG#	Stud Size		Dimension(mm)											Tool	pcs/pack	
			USA	Metric	d2	L1	L2	D	d	E								
A.W.G. 8 10mm ²	KFLL910	LYF90-10/6	1/4"	6	0.256	6.5	0.512	13.0	0.709	18.0	0.315	8.0	0.197	5.0	0.591	15.0	IZUMI 5N18	500
	KFLL911	LYF90-10/8	5/16"	8	0.331	8.4	0.531	13.5	0.807	20.5	0.315	8.0	0.197	5.0	0.591	15.0		500
A.W.G. 6 16mm ²	KFLL920	LYF90-16/6	1/4"	6	0.256	6.5	0.512	13.0	0.709	18.0	0.354	9.0	0.236	6.0	0.669	17.0	OPT TP-150D	500
	KFLL921	LYF90-16/8	5/16"	8	0.331	8.4	0.531	13.5	0.807	20.5	0.354	9.0	0.236	6.0	0.669	17.0		500
A.W.G. 4 25mm ²	KFLL930	LYF90-25/6	1/4"	6	0.256	6.5	0.669	17.0	0.709	18.0	0.433	11.0	0.315	8.0	0.728	18.5	OPT TP-150D	250
	KFLL931	LYF90-25/8	5/16"	8	0.331	8.4	0.669	17.0	0.807	20.5	0.433	11.0	0.315	8.0	0.728	18.5		250
	KFLL932	LYF90-25/10	3/8"	10	0.413	10.5	0.669	17.0	0.984	25.0	0.433	11.0	0.315	8.0	0.728	18.5		250
A.W.G. 2 35mm ²	KFLL940	LYF90-35/6	1/4"	6	0.256	6.5	0.709	18.0	0.709	18.0	0.512	13.0	0.354	9.0	0.886	22.5	OPT TP-150D	200
	KFLL941	LYF90-35/8	5/16"	8	0.331	8.4	0.669	17.0	0.807	20.5	0.512	13.0	0.354	9.0	0.886	22.5		200
	KFLL942	LYF90-35/10	3/8"	10	0.413	10.5	0.709	18.0	0.984	25.0	0.512	13.0	0.354	9.0	0.886	22.5		200
A.W.G. 1/0 50mm ²	KFLL950	LYF90-50/6	1/4"	6	0.256	6.5	0.827	21.0	1.024	26.0	0.571	14.5	0.433	11.0	1.201	30.5	OPT TP-150D	100
	KFLL951	LYF90-50/8	5/16"	8	0.331	8.4	0.827	21.0	1.024	26.0	0.571	14.5	0.433	11.0	1.201	30.5		100
	KFLL952	LYF90-50/10	3/8"	10	0.413	10.5	0.827	21.0	1.181	30.0	0.571	14.5	0.433	11.0	1.201	30.5		100
	KFLL953	LYF90-50/12	1/2"	12	0.512	13.0	0.827	21.0	1.26	32.0	0.571	14.5	0.433	11.0	1.201	30.5		100
A.W.G. 2/0 70mm ²	KFLL960	LYF90-70/6	1/4"	6	0.256	6.5	0.984	25.0	1.024	26.0	0.669	17.0	0.512	13.0	1.24	31.5	OPT TP-150D	100
	KFLL961	LYF90-70/8	5/16"	8	0.331	8.4	0.945	24.0	1.024	26.0	0.748	19.0	0.512	13.0	1.24	31.5		100
	KFLL962	LYF90-70/10	3/8"	10	0.413	10.5	0.984	25.0	1.181	30.0	0.669	17.0	0.512	13.0	1.24	31.5		100
	KFLL963	LYF90-70/12	1/2"	12	0.512	13.0	0.984	25.0	1.26	32.0	0.669	17.0	0.512	13.0	1.24	31.5		100
A.W.G. 3/0 95mm ²	KFLL970	LYF90-95/8	5/16"	8	0.331	8.4	1.142	29.0	1.024	26.0	0.787	20.0	0.591	15.0	1.28	32.5	OPT TP-150D	50
	KFLL971	LYF90-95/10	3/8"	10	0.413	10.5	1.142	29.0	1.181	30.0	0.787	20.0	0.591	15.0	1.28	32.5		50
	KFLL972	LYF90-95/12	1/2"	12	0.512	13.0	1.142	29.0	1.26	32.0	0.787	20.0	0.591	15.0	1.28	32.5		50
	KFLL973	LYF90-95/16	5/8"	16	0.669	17.0	1.142	29.0	1.417	36.0	0.787	20.0	0.591	15.0	1.28	32.5		50
A.W.G. 4/0 120mm ²	KFLL980	LYF90-120/10	3/8"	10	0.413	10.5	1.26	32.0	1.181	30.0	0.866	22.0	0.669	17.0	1.358	34.5	IZUMI EP-520C	30
	KFLL981	LYF90-120/12	1/2"	12	0.512	13.0	1.26	32.0	1.26	32.0	0.866	22.0	0.669	17.0	1.358	34.5		30
	KFLL982	LYF90-120/16	5/8"	16	0.669	17.0	1.26	32.0	1.417	36.0	0.866	22.0	0.669	17.0	1.358	34.5		30