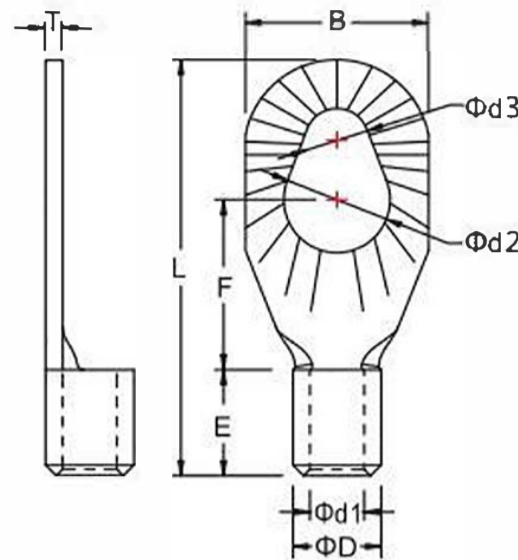


Non-Insulated Dual Screw Terminals

Brand	KF [®]
Finish/Coating	Tinned
Base Materials	Copper
Insulation Material	N/A
Brazed	Seam
Wire/Cable Type	Regular Wire
Color Code	Standard
MOQ	1000Pcs/item
Payment Terms	Based on orders
Delivery	FOB/CIF/DDP



Spec(American AWG)	26-22	22-16	16-14	14-12	12-10	8
Spec(JIS AWG)	0.5	1.25	2	3.5	5.5	8
Spec(DIN AWG)	0.5	1	2.5		4.0-6.0	10
Spec(GB mm ²)	0.1-0.5	0.5-1.5	2.5	4	6.0	10
Max Current		19	27	37	48.0	62



Wire Range	SKU#	MFG#	Stud Size		Dimension(mm)														Tool	pcs/pack
			USA	Metric	d2	d3	B	L	F	E	D	d1	T							
A.W.G. 22-16 0.5~1.5mm ²	KFO0810	MSRNB1.25-2237	#6	3.5	0.146	3.7	0.087	2.2	0.276	7.0	0.669	17.0	0.276	7.0	0.197 (5.0)	0.138 (3.5)	0.079 (2.0)	0.03 (0.75)	IZUMI 5N18	1000
	KFO0811	MSRNB1.25-3753	#10	5	0.209	5.3	0.146	3.7	0.335	8.5	0.768	19.5	0.315	8.0						1000
A.W.G. 16-14 1.5~2.5mm ²	KFO0820	MSRNB2-2237	#6	3.5	0.146	3.7	0.087	2.2	0.276	7.0	0.669	17.0	0.276	7.0	0.197 (5.0)	0.157 (4.0)	0.098 (2.5)	0.031 (0.8)	IZUMI 5N18	1000
	KFO0821	MSRNB2-3753	#10	5	0.209	5.3	0.146	3.7	0.335	8.5	0.768	19.5	0.315	8.0						1000
A.W.G. 12-10 4~6mm ²	KFO0830	MSRNB5.5-3753	#10	5	0.209	5.3	0.146	3.7	0.394	10.0	0.886	22.5	0.354	9.0	0.276 (7.0)	0.217 (5.5)	0.138 (3.5)	0.039 (1.0)	IZUMI 5N18	1000