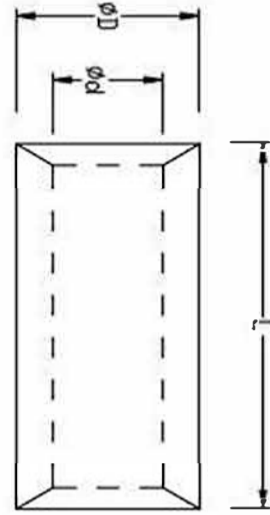


## Non-Insulated Butt Splice Connectors (Parallel)

Brand	KF <sup>®</sup>
Finish/ Coating	Tinned
Base Materials	Copper
Insulation Material	N/A
Brazed	Seam
Wire/ Cable Type	Regular Wire
Color Code	Standard
MOQ	1000Pcs/item
Payment Terms	Based on orders
Delivery	FOB/CIF/DDP



Spec(American AWG)	26-22	22-16	16-14	14-12	12-10	8	6	4	2	1/0	2/0	3/0
Spec(JIS AWG)	0.5	1.25	2	3.5	5.5	8	14	22	38	60	70	80
Spec(DIN AWG)	0.5	1	2.5	4	6	10	16	25	35	60	70	95
Spec(GB mm <sup>2</sup> )	0.1-0.5	0.5-1.5	2.5	4	6	10	16	25	35	60	70	95
Max Current	9	19	27	37	48	62	88	115	160	215	235	255
Spec(American AWG)	4/0	250-300MCM	300-350MCM	400-500MCM	500-600MCM							
Spec(JIS AWG)	100	150	180	200	325							
Spec(DIN AWG)	120	150	185	240	300							
Spec(GB mm <sup>2</sup> )	120	150	185	240	300							
Max Current	300	395	440	470	650							



Wire Range	SKU#	MFG#	Dimension(mm)						Tool	pcs/pack
			L		D		d			
A.W.G. 26-22 0.2~0.5mm <sup>2</sup>	KFBOS10	PNT0.5	0.315	8.0	0.079	2.0	0.059	1.5	OPT SN-02	1000
A.W.G. 22-16 0.5~1.5mm <sup>2</sup>	KFBOS20	PNT1.25	0.315	8.0	0.138	3.5	0.067	1.7	IZUMI 5N18	1000
A.W.G. 16-14 1.5~2.5mm <sup>2</sup>	KFBOS30	PNT2	0.315	8.0	0.157	4.0	0.098	2.5	IZUMI 5N18	1000
A.W.G. 14-12 2.5~4mm <sup>2</sup>	KFBOS40	PNT3.5	0.335	8.5	0.197	5.0	0.118	3.0	IZUMI 5N18	1000
A.W.G. 12-10 4~6mm <sup>2</sup>	KFBOS50	PNT5.5	0.335	8.5	0.217	5.5	0.138	3.5	IZUMI 5N18	1000
A.W.G. 8 8mm <sup>2</sup>	KFBOS60	PNT8	0.374	9.5	0.276	7.0	0.177	4.5	IZUMI 5N18	1000
A.W.G. 6 14mm <sup>2</sup>	KFBOS70	PNT14	0.433	11.0	0.354	9.0	0.236	6.0	OPT THX-185	200
A.W.G. 4 22mm <sup>2</sup>	KFBOS80	PNT22	0.531	13.5	0.453	11.5	0.315	8.0	OPT THX-185	200
A.W.G. 2 38mm <sup>2</sup>	KFBOS90	PNT38	0.65	16.5	0.512	13.0	0.374	9.5	OPT THX-185	200
A.W.G. 1/0 60mm <sup>2</sup>	KFBOSA0	PNT60	0.748	19.0	0.61	15.5	0.453	11.5	OPT THX-185	100
A.W.G. 2/0 70mm <sup>2</sup>	KFBOSB0	PNT70	0.748	19.0	0.689	17.5	0.531	13.5	OPT THX-185	100
A.W.G. 3/0 80mm <sup>2</sup>	KFBOSC0	PNT80	0.768	19.5	0.768	19.5	0.571	14.5	OPT THX-185	100
A.W.G. 4/0 100mm <sup>2</sup>	KFBOSD0	PNT100	0.787	20.0	0.866	22.0	0.65	16.5	OPT THX-185	100
A.W.G.250/300MCM 150mm <sup>2</sup>	KFBOS E0	PNT150	1.063	27.0	1.043	26.5	0.768	19.5	OPT THX-185	20
A.W.G.300/350MCM 180mm <sup>2</sup>	KFBOS F0	PNT180	1.122	28.5	1.122	28.5	0.827	21.0	OPT THX-325	20
A.W.G.400/500MCM 200mm <sup>2</sup>	KFBOS G0	PNT200	1.26	32.0	1.28	32.5	0.945	24.0	OPT THX-325	20
A.W.G.500/600MCM 325mm <sup>2</sup>	KFBOS H0	PNT325	1.457	37.0	1.457	37.0	1.102	28.0	OPT THX-325	20